

Foot Valve/Flush Fitting Instructions

Part No 13341 for high capacity (1/2" ID tubing).
Part No 13334 for standard capacity (1/4" ID tubing)

This kit includes a garden hose thread adaptor for the chemical suction hose making it easy to flush the chemical liquid end of the injector to clear it of any chemical deposits or trash that may have accumulated during normal use.

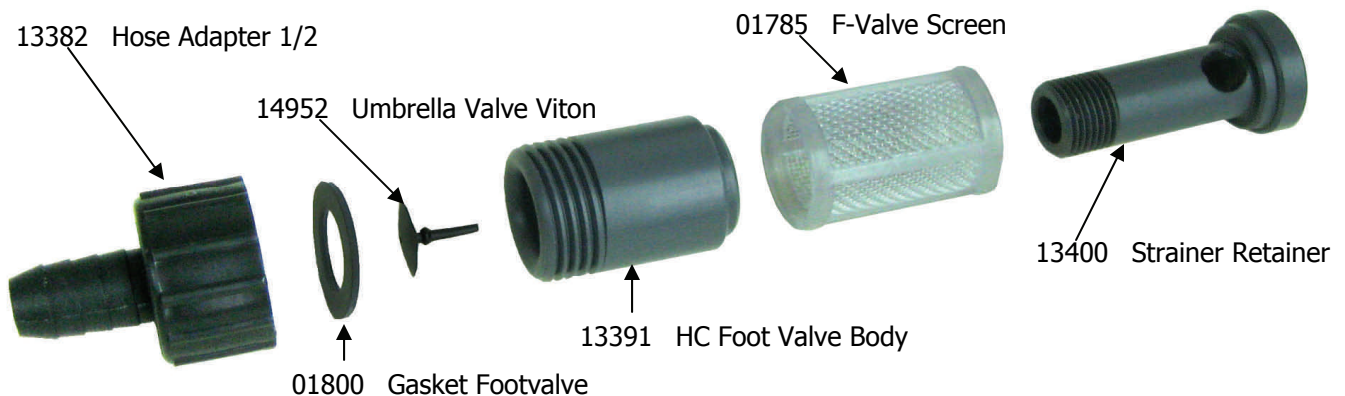
This kit also includes an improved design suction strainer featuring a male hose or tubing connection instead of the female barb used on P/N 13855. This prevents the strainer from accidentally coming loose from the suction tubing. Also, the strainer screen is secured by a screwed fitting instead of a snap retainer. This prevents the screen being accidentally dislodged during use, such as stirring the solution with a paddle and accidentally striking the screen.

Once a season, or as needed, pull the suction tubing out of the stock solution. Be aware and be careful of the chemical in use to prevent accidental spilling or splashing onto people or equipment. Use appropriate safety equipment. Have a solution (water) available to wash the strainer before touching. Unscrew the foot-valve/strainer section from the hose adaptor that is connected to the tubing and set aside.

Now connect your water hose to the adaptor.

Then go to the air release vent on the discharge side of the pumper chemical line. There are several designs so look at the parts list included with your injector to find the design used on your installation. Attach tubing of the proper size to the vent barb and direct it to a container so you can catch the chemical and trash from the chemical line when the vent is opened. A short piece was included with the valve but you may wish to use a longer piece. The tubing is 1/4" ID and 3/8" OD and can be purchased from H. E. Anderson Co., or home centers. Now open the vent, and turn on the water supply. Let the water flush out the chemical line and check valves of the pumper liquid end. Turn off the water supply hose and close the air release vent. Remove the hose and adaptor and replace the strainer. Place the strainer and tubing back in the chemical solution and start the water flow through the injector or use the pulsing feature on J Plus models to stroke the pumpers. Open the air release vent to re-prime the chemical lines. When chemical appears out of the air release vent, close the vent and the unit is ready for use.

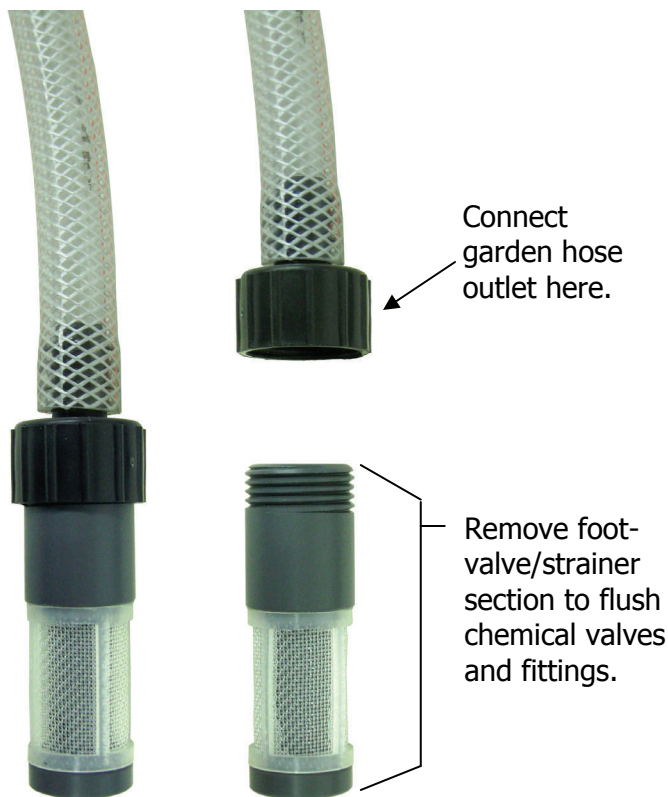
P/N 13341 Foot Valve/Flush Fitting (High Capacity for 1/2" ID Tubing)



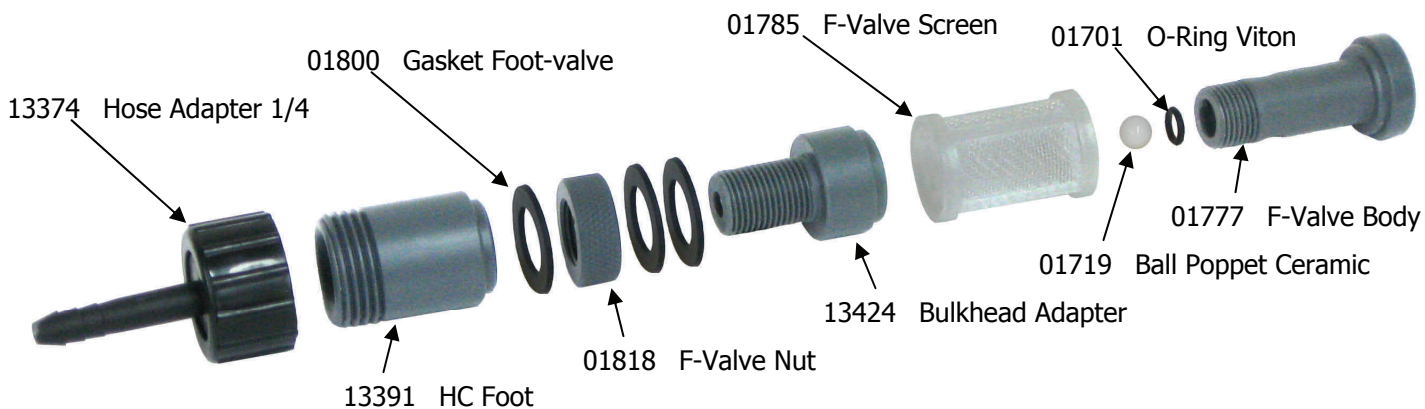
WARNING! Use with water soluble chemicals only.
NEVER FLUSH CONCENTRATED ACID LINES WITH WATER!

P/N 13341 Foot Valve/
 Flush Fitting 1/2"

Shown installed on
 1/2" ID suction line



P/N 13334 Foot Valve/Bulkhead/Flush Fitting 1/4 (Standard Capacity for 1/4" ID Tubing)



P/N 13334 Foot Valve/Flush Fitting 1/4 shown installed as a bulkhead fitting.

WARNING! Do not disconnect hose adapter unless tank is empty.

The tubing is a tight fit. Heat the tubing before sliding onto the barb.

